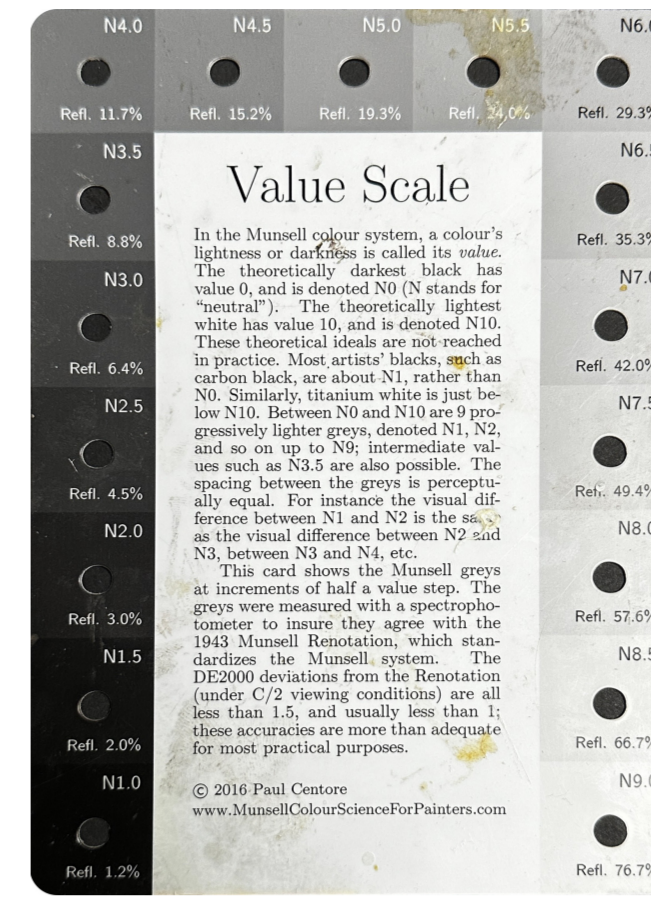


Drawing

- 18” x 24 Drawing paper - I like Stonehenge, Strathmore 400 can work too
- Some graphite pencils ranging from 2H - 4B
- Generals Charcoal Powder
- Kneaded eraser
- Single edge razors for sharpening
- 220 grit sandpaper
- Medium size blending stump
- (Optional) Copic Warm grey Multiliner 0.5 Pen
- (Optional) Uni Pin Fineliner Drawing Pen - Dark Grey Tone - 0.5mm
- Vine charcoal and compressed charcoal stick or pencils can be nice sometime

Nice to have but not necessary



Munsell Value Scale

<https://www.ebay.com/itm/223003792036>

NON-US purchase

Or search google: “Munsell-Accurate Value/Gray Scale for Artists, Designers, Quilters, etc.”