

# Paints

Feel free to use substitutions, but these are the paints I'll use:

- Lead white #1 or #2 (Rublev) Or use the Lead White Replacement recipe (Alkyd option)
- Van Dyke Brown (MH)
- Raw Umber (MH)
- Raw Sienna (MH)
- Mars Yellow (OH) OR Yellow Ochre
- Mars Red Light (Williamsburg)
- Ivory Black (OH)
- Trans Oxide Red (Williamsburg)
- Trans Oxide Yellow (OH)
- Quin Rose (MH) or
- Alizarin Permanent (Gamblin)

(OH) = Old Holland, (MH) = Michael Harding

# Mediums

## Rublev

Velazquez Medium

Walnut Oil Gel (Substitute with Walnut oil)

Stand Oil (any brand)

# Drawing

- 18" x 24" Drawing paper for the initial sketch.\*
- Some graphite pencils ranging from 2H - 4B
- Generals Charcoal Powder
- Kneaded eraser
- Single edge razors for sharpening
- 220 grit sandpaper
- Medium size blending stump
- (Optional) Copic Warm grey Multiliner 0.5 Pen
- (Optional) Uni Pin Fineliner Drawing Pen - Dark Grey Tone - 0.5mm
- Charcoal stick for transfer

\*If you're not comfortable with photographing your drawing and having it printed out on printer paper, a thinner drawing paper is recommended, like typical sketch paper thickness of 70lb or so.

This way you can use your drawing itself as the transfer material

# Brushes

Rosemary brushes are hard to beat for quality and price.

Rosemary Michael Klein Rounds size 1,2,3,4

Escoda Classico long rounds 2, 6, 8, 10 | **Or Less expensive option:** Use

Rosemary Ivory Rounds sizes 2, 3, 4, 5, 6 for a better deal

Rosemary Shiraz Series Rounds size 0,1,2,3,4,5

Rosemary Master's Choice Rounds size 1,2,3,4

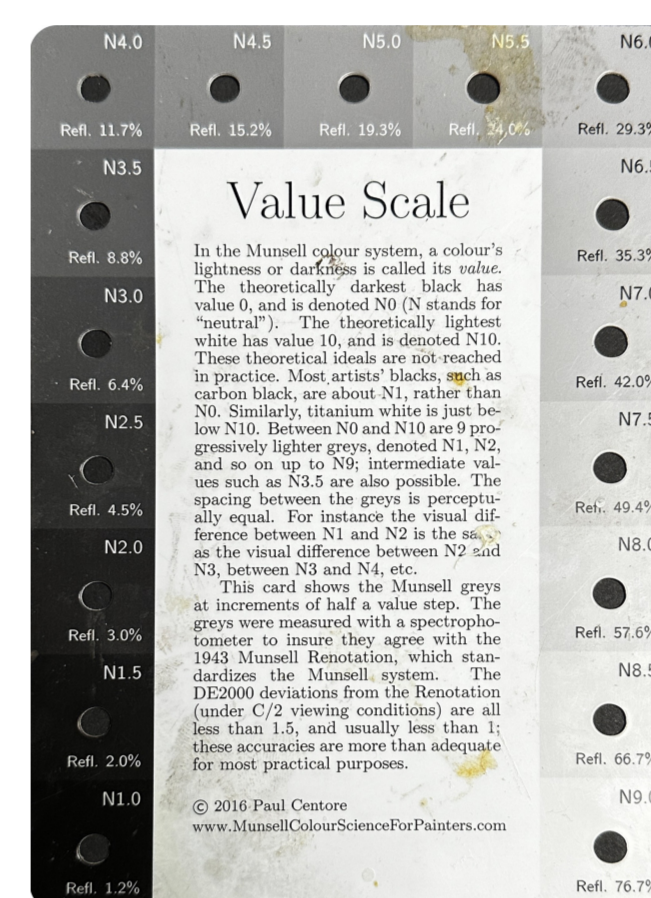
Rosemary Kolinsky or Red Sable or Red Dot rounds 2 or 3

# Supports/Canvas

Also:

- Palette Knife
- Paper Towels (Viva or bounty are the best)
- Small containers for holding medium
- Any palette you're comfortable with

Nice to have but not necessary



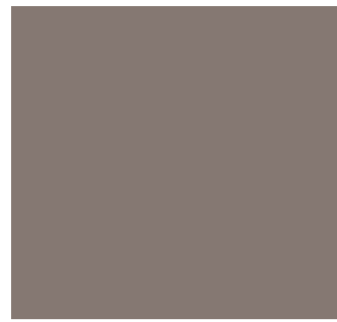
## Munsell Value Scale

<https://www.ebay.com/itm/223003792036>

## NON-US purchase

Or search google: "Munsell-Accurate Value/Gray Scale for Artists, Designers, Quilters, etc."

**One** - 16" x 20" panel. Primed with 2-3 coats of Golden® Gesso mixed with Golden® Raw Umber Acrylic (**Heavy Body**) to get a Value 5 middle tone, about this color/value



If you prefer you can use a white primed panel and tone with a transparent wash of Van Dyck brown or similar. It's a little different than the suggested priming but perfectly fine for this class.